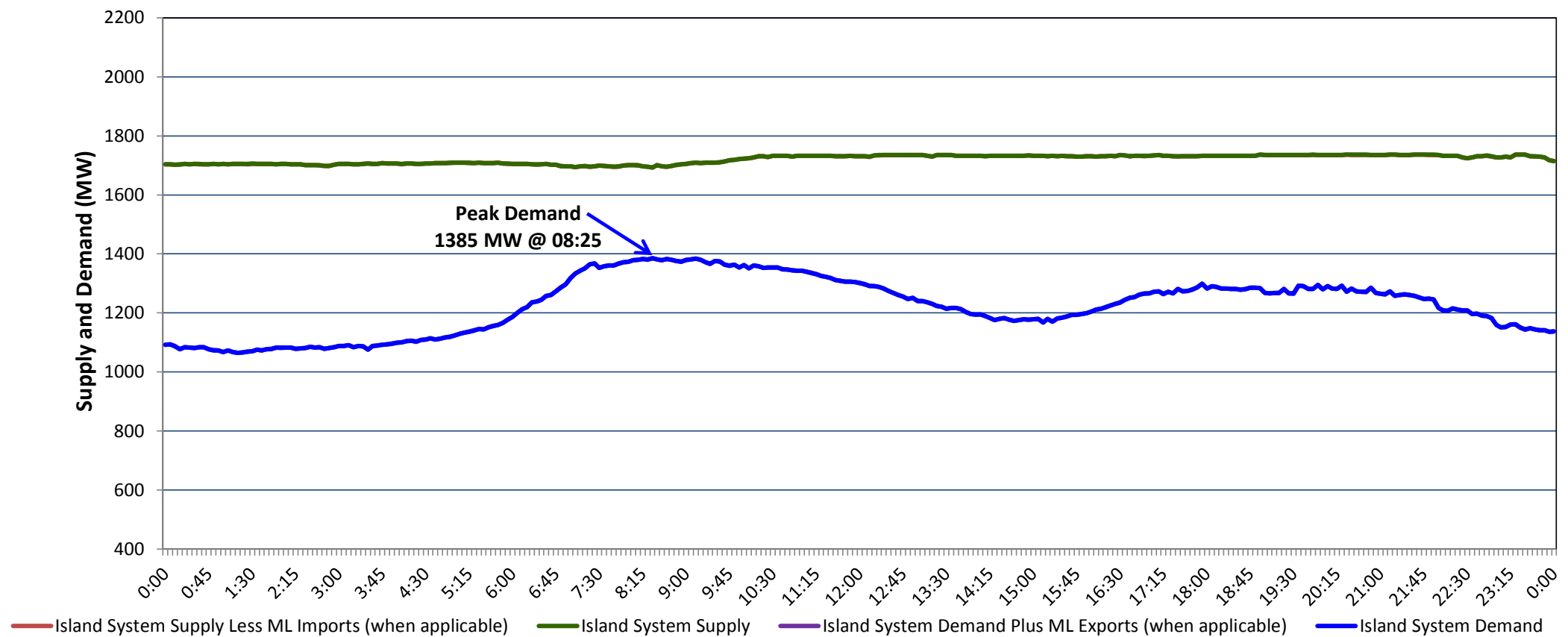


**Newfoundland Labrador Hydro (NLH)
Supply and Demand Status Report Filed Tuesday, February 13, 2018**

**Section 1
Island Interconnected System Supply, Demand & Exports
Actual 24 Hour System Performance For Monday, February 12, 2018**



Supply Notes For February 12, 2018

1,2

- A As of 2115 hours, January 04, 2018, Stephenville Gas Turbine available at 25 MW (50 MW).
- B As of 1204 hours, February 03, 2018, Holyrood Unit 1 unavailable 70 MW (170 MW).
- C As of 1550 hours, February 08, 2018, Holyrood Unit 2 available at 127 MW (170 MW).
- D As of 2150 hours, February 11, 2018, Holyrood Unit 3 available at 70 MW (150 MW).

**Section 2
Island Interconnected Supply and Demand**

Tue, Feb 13, 2018	Island System Outlook ³	Seven-Day Forecast	Temperature (°C)		Island System Daily Peak Demand (MW)	
			Morning	Evening	Forecast	Adjusted ⁷
Available Island System Supply: ⁵	1,765 MW	Tuesday, February 13, 2018	-5	-11	1,685	1,574
NLH Generation: ⁴	1,410 MW	Wednesday, February 14, 2018	-12	-3	1,650	1,441
NLH Power Purchases: ⁶	140 MW	Thursday, February 15, 2018	-2	0	1,415	1,223
Maritime Link Imports:	- MW	Friday, February 16, 2018	0	-1	1,335	1,223
Other Island Generation:	215 MW	Saturday, February 17, 2018	-3	-7	1,525	1,416
Current St. John's Temperature & Windchill: -7 °C	-17 °C	Sunday, February 18, 2018	-9	-6	1,555	1,446
7-Day Island Peak Demand Forecast:	1,685 MW	Monday, February 19, 2018	-5	2	1,460	1,258

Supply Notes For February 13, 2018

3

- E At 0752 hours, February 13, 2018, Holyrood Unit 3 available at 103 MW (150 MW).

- Notes:
1. Generation outages for running and corrective maintenance are included. These are not unusual for power system operations. They generally do not impact customer supply. The power system operators schedule outages to system equipment whenever possible to coincide with periods when customer demands are low and sufficient supply reserves are available. However, from time to time equipment outages are necessary and reserves may be impacted.
 2. Due to the Island System having no synchronous connections to the larger North American grid, when there is a sudden loss of large generating units some customer's load must be interrupted for short periods to bring generation output equal to customer demand. This automatic action of power system protection, referred to as under frequency load shedding, is necessary to ensure the integrity and reliability of system equipment. Under frequency events typically occur 5 to 8 times per year on the Island Interconnected System and the resultant customer load interruptions are generally less than 30 minutes.
 3. As of 0800 Hours.
 4. Gross output including station service at Holyrood (24.5 MW) and improved NLH hydraulic output due to water levels (35 MW).
 5. Gross output from all Island sources (including Note 4).
 6. NLH Power Purchases include: CBPP Co-Gen, Nalcor Exploits, Rattle Brook, Star Lake, Wind Generation, Vale capacity assistance (when applicable).
 7. Adjusted for CBP&P, Vale and Praxair interruptible load, Maritime Link Exports and the impact of voltage reduction (when applicable).

**Section 3
Island Peak Demand Information
Previous Day Actual Peak and Current Day Forecast Peak**

Mon, Feb 12, 2018	Actual Island Peak Demand ⁸	08:25	1,385 MW
Tue, Feb 13, 2018	Forecast Island Peak Demand		1,685 MW

- Notes: 8. Island Demand / ML Exports (where applicable) is supplied by NLH generation and purchases, plus generation owned and operated by Newfoundland Power and Corner Brook Pulp & Paper (Deer Lake Power, DLP).